



PRODUCT CATALOG

Updated on February 06, 2025

REPLACEMENT
HYDRAULIC CYLINDERS
& COMPONENTS

Industry Breakdown

PAGE 4

SCRAP GRAPPLE PARTS

4 Aftermarket Young® Grapple Parts

- ▶ Models LO100B/C, LO125B/C, LO150B/C, LO200B/C, LO250B/C
- ▶ Models LO300C, LO400C, LO205C
- ▶ Models LO100D through LO250D
- ▶ Models 1114B, LO75B-LO95B & LO75C-LO95C
- ▶ Models LO-50D, LO75D, LO-95D, LO5-90D
- ▶ Universal Replacement Parts for Young®

10 Aftermarket Liebherr® Grapple Parts

- ▶ Series 64 & 65
- ▶ Series 69 & 70
- ▶ Series 80
- ▶ Universal Replacement Parts

15 Aftermarket Bateman® Grapple Parts

- ▶ 200 Series Grapples: P/N B4T2-125, B4T2-150, B4T2-200, B4T2-300, B5T2- 100, B5T2-125, B5T2-150, B5T2-200, B5T2-300
- ▶ 150 Series Grapples: P/N B4T150-050, B4T150-075, B4T150-100, B4T150- 125, B4T150-150, B5T15-075, B5T15-100, B5T15-125
- ▶ Universal Replacement Parts

16 Aftermarket Fuchs® Grapple Parts

- ▶ Model HDMS 0,4 | 0,6 | 0,8 Grapples
- ▶ Universal Replacement parts.

18 Aftermarket Rotobec® Parts

19 Aftermarket CAT® Parts

- ▶ Grapples: GSH15B, GSH20B & GSH22
- ▶ CAT O-ring kits

PAGE 20

CONSTRUCTION MACHINERY

21 Aftermarket Bobcat® Cylinders

- ▶ Skid Steers / Track Loader / Mini Excavator
Wheel Loader / Grapple & Attachment
Cylinders

30 Aftermarket Kubota® Cylinders

- ▶ Skid Steers / Track Loader / Mini Excavator

31 Aftermarket CAT® Parts

- ▶ Skid Steers / Track Loader

33 Aftermarket Takeuchi® Cylinders

- ▶ Hitch & Thum Cylinders
- ▶ Bucket Cylinders

35 Aftermarket Case® Cylinders

- ▶ Case Cylinders

PAGE 37

MATERIAL HANDLING EQUIPMENT

38 Aftermarket JLG® Cylinder

38 Aftermarket TOYOTA® Cylinders

38 Aftermarket Hyundai® Cylinder

38 Aftermarket Komatsu® Cylinder

38 Aftermarket Genie® Cylinder

38 Aftermarket Hyster® Cylinder

PAGE 39

AGRICULTURE MACHINERY

40 Aftermarket John Deere® Cylinders

40 Aftermarket Case IH® Cylinders

41 Aftermarket New Holland® Cylinders

PAGE 42

ROLL OFF CONTAINER PARTS

43 Aftermarket Galbreth® Cylinders

43 Aftermarket Pioneer® Cylinders

A low-angle, close-up shot of a yellow hydraulic grapple with multiple curved tines, suspended in the air. The grapple is part of a larger machine, with a control panel visible on the left. In the background, a large industrial facility, likely a scrap metal recycling plant, is visible. It features several tall, red lattice cranes and stacks of colorful shipping containers. The sky is a clear, pale blue. In the foreground, a pile of scrap metal, including twisted rebar and other debris, is visible on a wooden platform.

SCRAP GRAPPLE PARTS

Models LO100B/C, LO125B/C, LO150B/C, LO200B/C, LO250B/C



BMF-15W359
Grapple Cylinder

High strength and rugged cylinder is rated at 5000psi. 4" bore x 12.5" stroke and a 2.5" diameter rod. Replacement for YOU-15W359/ Nordic 1236. Replacement grapple cylinder for a Young® grapple models LMG100C, LO100B/C, LO125B/C, LO150B/C, LO200B/C, LO250B/C.

BMF-587V512
Grapple Cylinder Seal
Kit 2.5"x4"x12.5"



Contains all the seals required for a YOU-15W359 cylinder rebuild, less BMF-2189P20023 Rod Wiper. Replacement for YOU-587V512.

BMF-534V368
Cylinder Bushing ID 2"
OD 2.5" L:2" (55-60 HRC)



Hardened 2" dia steel bushing for cylinder rod eye and barrel eye. A YOU-15W359 cylinder requires four bushings for upper and lower connection. Replacement for YOU-534V368.

BMF-365W391
Lower Cylinder Pin



2" Hardened steel lower cylinder pin with welded locking tab. Lower cylinder pin that connects 15W359 cylinder to the tine. Fits BMF-534V368 cylinder bushing. Aftermarket replacement for YOU-365W391.

BMF-395W409
Upper Cylinder Pin



2" Hardened steel upper cylinder pin. Upper cylinder pin that connects 15W359 cylinder to the tine. Fits BMF-534V368 cylinder bushing. Aftermarket replacement for YOU-395W409.

BMF-D-23807
Replacement 15W359
Cylinder Rod & Shield



Replacement Young® grapple cylinder rod with weld on shield. Used on cylinder P/N YOU-15W359.

BMF-D-23804
Replacement 15W359
Cylinder Barrel



Replacement Young® grapple cylinder barrel. Used on cylinder P/N YOU-15W359.

BMF-C-22496
Replacement 15W359
Piston



Replacement Young® grapple cylinder piston. Used on cylinder P/N YOU-15W359.

BMF-C-23821
Replacement 15W359
Gland



Replacement Young® grapple cylinder head gland. Used on cylinder P/N YOU-15W359.

REPLACEMENT YOUNG® GRAPPLES

Models LO300C, LO400C, LO205C



BMF-15W441
Grapple Cylinder
3"x5"x17"

High strength and rugged cylinder is rated at 5000psi. 5" bore x 17" stroke and a 3" diameter rod. Aftermarket replacement for YOU-15W441. Replacement grapple cylinder for a Young®, LO300C, LO400C, LO205C grapple.

BMF-587W680
Seal Kit for 15W441
cylinder



Contains all the seals required for a YOU-15W441 cylinder rebuild, less the BMF-387V42 Rod wiper. Aftermarket replacement for YOU-587W680.

BMF-387V42
Pin Wiper



Rod Wiper Seal for 15W441 cylinder. A cylinder requires four rod wiper seals. Aftermarket replacement for YOU-387V42.

BMF-B23742
Cylinder Bushing 2.5x4"



Hardened 2-1/2" ID, 4" long steel bushing for BMF-15W441 cylinder rod eye. A cylinder requires (1) bushing.

BMF-B23762
Cylinder Bushing 2.5x 2 11/16"



Hardened 2-1/2" ID, 2 11/16" long steel bushing for BMF-15W441 cylinder barrel eye. A cylinder requires (2) bushings.

BMF-D-24173
Replacement 15W441
Cylinder Rod & Shield



Replacement Young® grapple cylinder rod with weld on shield. Used on cylinder P/N YOU-15W441.

BMF-D-24171
Replacement 15W441
Cylinder Barrel



Replacement Young® grapple cylinder barrel. Used on cylinder P/N YOU-15W441.

BMF-210X62
Replacement 15W441
Piston



Replacement Young® grapple cylinder piston. Used on cylinder P/N YOU-15W441.

BMF-102X2
Replacement 15W441
Gland



Replacement Young® grapple cylinder head gland. Used on cylinder P/N YOU-15W441.

Models LO100D through LO250D



BMF-15W503
Grapple Cylinder
2.5"x3.5"x13.5"

High strength and rugged cylinder is rated at 5000psi. 3.5" bore x 13.5" stroke and a 2.5" diameter rod. Aftermarket replacement for YOU-15W503. Replacement grapple cylinder for a Young®, LO-100D through LO-250D, MODEL W503 grapple.

BMF-587V888

Seal Kit

Contains all the seals required for a YOU-15W503 cylinder rebuild, less BMF-2189P20023 Rod Wiper. Replacement for YOU-



BMF-534V557

Aftermarket Young® Cylinder Bushing

Hardened 2" dia steel bushing for cylinder rod eye and barrel eye. A YOU-15W503 cylinder requires four bushings for upper and lower connection. Replacement for YOU-534V557.



BMF-365W422

"D" Style Upper Cylinder Pin

2" Hardened steel upper cylinder pin. Upper cylinder pin that connects 15W503 cylinder to the tine. Fits BMF-534V557 cylinder bushing. Aftermarket replacement for YOU-365W422.



BMF-365W423

"D" Style Lower Cylinder Pin

2" Hardened steel lower cylinder pin. Lower cylinder pin that connects 15W503 cylinder to the tine. Fits BMF-534V557 cylinder bushing. Aftermarket replacement for YOU-365W423.



BMF-587V955

Rotary Union Seal Kit

Seals for a YOU-28W2244 (D SERIES) rotary union. Includes: (2) Wear Rings, 3 3/4" O.D. x 3/4", (2) molded O-ring's, (1) Double acting seal, (2) Single acting seals. Replacement for YOU- 587V955.



BMF-208W354

"D" Style Grapple Leg Pin

3" hardened steel grapple leg (tine) pin. Fits BMF-534W315 grapple leg pin bushing. Aftermarket replacement for YOU-208W354.



BMF-629Y66

Replacement 15W503 Cylinder Rod & Shield

Replacement Young® grapple cylinder rod with weld on shield. Used on cylinder P/N YOU 15W503.



BMF-626Y78

Replacement 15W503 Cylinder Barrel

Replacement Young® grapple cylinder barrel. Used on cylinder P/N YOU-15W503.



BMF-210W80

Replacement 15W503 Piston

Replacement Young® grapple cylinder piston. Used on cylinder P/N YOU-15W503.



BMF-102W28

Replacement 15W503 Gland

Replacement Young® grapple cylinder head gland. Used on cylinder P/N YOU-15W503.



REPLACEMENT YOUNG® GRAPPLES

Models 1114B, LO75B-LO95B & LO75C-LO95C



BMF-15W235B
Grapple Cylinder
2"x3.5"x10"

High strength and rugged cylinder is rated at 5000psi. 3.5" bore x 10" stroke and a 2" diameter rod. Aftermarket replacement for YOU-15W235B. Replacement grapple cylinder for a Young®, 1114B, LO75B-LO95B & LO75C-LO95C grapple.



BMF-587V397
Seal Kit

Contains all the seals required for a YOU-15W235B cylinder rebuild, less the BMF-387V42 Rod wiper. Aftermarket replacement for YOU-587V397.

Models LO-50D, LO75D, LO-95D, LO5-90D



BMF-15W505

Aftermarket Young® Grapple Cylinder 2.5x4x12.5"

High strength and rugged cylinder is rated at 5000psi. 3.25" bore x 10.5" stroke and a 2.25" diameter rod. Aftermarket replacement for YOU®15W505. Replacement grapple cylinder for a Young® LO-50D, LO-75D, LO-95D & LO5-90D grapple.



BMF-587V1012

Aftermarket Young® 15W505 "D Series" Seal Kit

Contains all the seals required for a YOU-15W505 cylinder rebuild, less the (x4) BMF-2189P20023 pin wipers. Aftermarket replacement for YOU-587V1012.

Models NO5-500SF



BMF-15W437

Aftermarket Young® Grapple Cylinder 3.5x5.5-16.5"

High strength and rugged cylinder is rated at 5000psi. 5.5" bore x 16.5" stroke and a 3.5" diameter rod. Aftermarket replacement for YOU-15W437. Replacement grapple cylinder for a Young® NO5-500SF grapple.

Universal Replacement Parts for Young®

BMF-587V735

Rotary Union Seal Kit



Seals for a YOU-28W2177 (C SERIES) rotary union. Includes: (2) split 45° guide band, (2) molded O-ring's, (1) 4pc compact rod seal, (2) compact rod seal. Replacement for YOU-587V735. Does not include bronze thrust washers

BMF-587V517

Rotary Union Seal Kit



Seals for a YOU-28W1777 (B SERIES) rotary union. Includes: (3) Rod seals, (2) guide bands, (2) o-rings and (4) back up o-rings. Aftermarket replacement for YOU-587V517. Does not include bronze thrust

BMF-2189P20023

2" Pin Eye Wiper

Wiper seal for 2" dia cylinder rod. A cylinder requires four rod wiper seals. Replacement for YOU-2189P20023. Used on both C & D series grapples.



BMF-208W301

Grapple Leg Pin

3" hardened steel grapple leg (tine) pin. Fits BMF-534W369 grapple leg pin bushing. Aftermarket replacement for YOU-208W301.



BMF-618V19

Replacement Hydraulic Motor for Young® LOB and LOC Grapple Heads

Medium duty hydraulic motor and break. An excellent value offering long lasting performance at a competitive price point. Replacement for a YOU-618V19 / LBG100-78. Used on both C & D series grapples.



BMF-477V92

Rotary Union Thrust Washer (Used with rotary union seal kit BMF-587V735)



Bronze thrust washer, 4.2" x 3.5" x 0.2". Replacement for a YOU-477V92. Used on both C & D series grapple rotary unions. Can be used with both BMF-587V955 and BMF-587V735

BMF-477V67

Rotary Union Thrust Washer (Used with rotary union seal kit BMF-587V717)



Bronze thrust washer, 4.2" x 3.5" x 0.2". Used with the BMF-587V517 rotary seal union kit. Aftermarket replacement part for YOU-477V67.

BMF-534W369

Grapple Leg Bushing

Hardened 3" ID steel bushing for grapple tine. Aftermarket replacement for YOU-534W369. Fits BMF-208W301 grapple leg pin.



BMF-534V315

Aftermarket Young® Tine Bushing

Hardened 3" ID steel bushing for grapple tine. Aftermarket replacement for YOU-534V315.



BMF-587V75

Replacement Seal Kit for Young® (618V19) Grapple Head Motor

Contains all the seals for a Young® (618V19) Grapple Head Motor rebuild.



BMF-587V667

Aftermarket Young® 15W437 grapple cylinder Seal Kit

Contains all the seals required for a YOU-15W437 cylinder rebuild, less the (x4) BMF-2189P35056 pin wipers. Aftermarket replacement for YOU-587V667.



REPLACEMENT YOUNG® TINE TIPS

Young® Grapple Tine Tips

BMF-310X74

Tine Tip

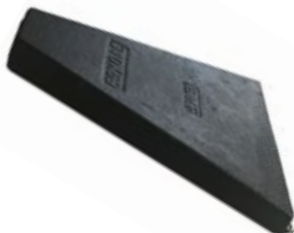
Cast steel weld on tine tip.
Hardened, wear resistant steel for maximum wear life. Used on Young® grapple NO5-505. Aftermarket replacement for YOU-310X74.



BMF-310X69

Tine Tip

Cast steel weld on tine tip.
Hardened, wear resistant steel for maximum wear life. Aftermarket replacement for YOU-310X69.



BMF-211W57

Tine Tip

Cast steel weld on tine tip.
Hardened, wear resistant steel for maximum wear life. Aftermarket replacement for YOU-211W57. Fits LO100D, LO125D, LO-150D, LO-200D & LO250D grapples.



BMF-310W68

Tine Tip

Cast steel weld on tine tip.
Hardened, wear resistant steel for maximum wear life. Aftermarket replacement for YOU-310X86.



BMF-211W4

Tine Tip

Cast steel weld on tine tip.
Hardened, wear resistant steel for maximum wear life. Aftermarket replacement for YOU-211W4. Fits LO300C & LO400C grapples.



BMF-211W64

Tine Tip

Cast steel weld on tine tip.
Hardened, wear resistant steel for maximum wear life. Aftermarket replacement for YOU-211W64. Fits LO50D, LO75D & LO95D grapples.



BMF-211W6

Tine Tip

Cast steel weld on tine tip.
Hardened, wear resistant steel for maximum wear life. For grapples LO100C through LO250C, LO205C. Aftermarket replacement for YOU-211W6.



Series 64 & 65 Aftermarket Replacement Parts

BMF-9241931

Aftermarket Liebherr® Grapple
Cylinder 70x50x215mm

High strength and rugged cylinder is rated at 5000psi. 70mm bore x 215mm stroke and 50mm diameter rod. Spherical bearings on cylinder and rod ends. Aftermarket replacement for Liebherr® grapple cylinder 9241931. Fits series 64 & 65 (0.52-0.78 cu yd) grapples.



BMF-9063462

Barrel- 215mm

Welded and honed barrel, includes (1) 7025750 bearing, (1) 4281012 snap ring and (1) 7743242 grease fitting. Used with cylinder BMF-9241931.



BMF-9063463

Chromed rod 215mm



Solid forged chrome rod, includes (1) 7025750 bearing, (2) 4281012 snap rings, (1) 7001228 grease fitting and (1) 4242017 retaining ring. Used with BMF-9241931 cylinder.

BMF-3201484

Cast Steel Shield
215mm



Painted cast steel shield (half shell), used on BMF-9241931 cylinder. Secured with BMF-9240002 hardware kit.

BMF-9200966

Shield Set- 215mm



Replacement cylinder cover set, includes (2) BMF-3201484 shield halves and (1) 9240002 hardware set. Used with BMF-9241931 cylinder.

Series 69 & 70 Aftermarket Replacement Parts

BMF-9245992

Aftermarket Liebherr® Grapple
Cylinder 70x50x315mm

High strength and rugged cylinder is rated at 5000psi. 70mm bore x 315mm stroke and 50mm diameter rod. Spherical bearings on cylinder and rod ends. Aftermarket replacement for Liebherr® grapple cylinder 9245992. Fits series 69 & 70 (1.05-1.44 cu yd)



BMF-9063666

Barrel- 315mm

Welded and honed barrel, includes (1) 7025750 bearing, (1) 4281012 snap ring and (1) 7743242 grease fitting. Used with BMF-9245992 cylinder.



BMF-9063664

Chromed rod 315mm



Includes (1) 7025750 bearing, (2) 4281012 snap rings, (1) 7001228 grease fitting and (1) 4242017 retaining ring. Used on BMF-9245992 cylinder.

BMF-9235003

Shield Set- 315mm



Replacement cylinder cover set, includes (2) BMF-3201549 shield halves and (1) 9240002 hardware set. Used with BMF-9245992 cylinder.

BMF-3201549

Cast Steel Shield 315mm



Painted cast steel shield (half shell), used on BMF-9245992 cylinder. Secured with BMF-9240002 hardware kit.

REPLACEMENT LIEBHERR® GRAPPLES

Series 80 Aftermarket Replacement Parts



BMF-94040349

**Aftermarket Liebherr® Grapple
Cylinder 80x56x295mm**

High strength and rugged cylinder is rated at 5000psi. 80mm bore x 295mm stroke and 56mm diameter rod. Spherical bearings on cylinder and rod ends. Aftermarket replacement for Liebherr® grapple cylinder 94040349. Fits series 80 grapples.

BMF-40117441

80mm Piston



Hardened steel piston. Used on BMF-94040349 cylinder.

BMF-94016827

Chromed rod 295mm



Includes (1) 7003242 bearing, (2) snap rings, and (1) 7001228 grease fitting. Used on BMF-94040349 cylinder.

BMF-94016832

Barrel- 295mm



Welded and honed barrel, includes (1) 7003242 bearing, (1) snap ring and (1) 7743242 grease fitting. Used with BMF-94040349 cylinder.

Universal Replacement Parts for Liebherr®

BMF-9063464

70mm Piston Seal Kit

70mm piston seal kit for Liebherr® 9241931 and



BMF-9155154

50mm Rod Seal Kit

50mm rod seal kit for Liebherr® 9241931 and



BMF-94016757/94034126

**Aftermarket Liebherr®
56mm Rod Seal Kit**

56mm rod seal kit for Liebherr® 94040349 cylinder.



BMF-9062172

**Aftermarket Liebherr®
80mm Piston Seal Kit**

80mm piston seal kit for Liebherr® 94040349 cylinder.



BMF-9922518

**Replacement Rotary
Union Seal Kit**

Includes x3 quad seals, x6 back up rings and x2 o-rings. Used on series 64, 65, 69 & 70 grapples.



BMF-7264643

**Replacement Rectangle
Ring Set**

(x2 rectangle rings per kit)

Set of x2 buna-N rectangle rings.



Universal Replacement Parts for Liebherr® cont.

BMF-9710216

Thrust Washer

Bronze thrust washer used in Liebherr® rotary union.



BMF-7003242

Spherical Bearing

Heavy duty spherical bearing. Used on BMF-94040349 cylinder.



BMF-3201712

Tine Tip

Weld on replacement Liebherr® Grapple Tine Tip (Shell Point) - Forged, Hardened Steel Alloy. Universal tine tip, used on all Liebherr® Grapples.



BMF-9240002

Replacement Shield Hardware

Includes (6) Grade10.9 bolts and (6) Grade 10 locknuts, zinc plated. Used with BMF-3201484 and BMF-3201549 shields.



BMF-1000544

Straight Grease Nipple



BMF-7002361

Hydraulic Fitting

Hydraulic male-male steel fitting, GE 16S G1/A1.



BMF-7025750

Spherical Bearing

Heavy duty spherical bearing. Used on both BMF-9241931 and BMF-9245992 cylinders.



BMF-9359599

Replacement Barrel/Rod Bushing

Replacement rod/barrel bushing. Alternative for BMF-7025750 rod eye fitting.



BMF-9242102

70mm Piston

Hardened steel piston. Used on both BMF-9241931 and BMF-9245992 cylinders.



BMF-9958886

50/70mm Rod Gland

Used on both BMF-9241931 and BMF-9245992 cylinders.



BMF-7001228

45° Grease Nipple



BMF-4281012

Locking Rings DIN 4725

lock ring used on Liebherr® rod and barrel spherical bushings



Universal Replacement Parts for Liebherr® cont.

BMF-4000592

Socket Head Bolt M10x70 (Set)

10 piece bolt set, used with both BMF-9241931 and BMF-9245992 cylinders.



BMF-9240001

Replacement Oil Port Fittings

Machined steel, 2 pieces.



BMF-9161350

Upper Ring

Zinc plated steel spacer used with BMF-9830051 cylinder pin for upper cylinder assembly with grapple.



BMF-9830051

Cylinder Pin

Hardened steel pin used to secure cylinder to grapple and tine. Includes x1 washer, x1 castle nut and x1 cotter pin.



BMF-9166643

Tine Bushing

Bronze tine bushing. x2 used per tine.



BMF-9233215

Washer

Galvanized steel disc used with tine pin assembly.



BMF-4242017

Snap Ring DIN 7095147

snap ring used to secure Liebherr® piston and rod.



BMF-7000004

Rotary Union Bushing

PTFE lined steel bushings used in Liebherr® rotary union. x2 needed for complete rotary rebuild.



BMF-9923177

Lower Ring

Zinc plated steel spacer used with BMF-9830051 cylinder pin for lower cylinder assembly with tine



BMF-9226818

Tine Pin

Hardened steel pin used to secure tine with grapple assembly.



BMF-9586602

Spacer Bushing

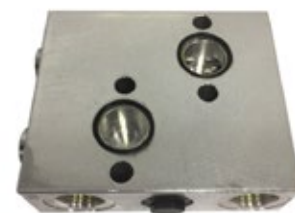
Machined spacer. Used with BMF-9166643.



BMF-7026352

Valve Manifold

100 Bar anti-shock valve in aluminum housing. Used with hydraulic motor BMF-5009983. Includes x4 mounting bolts and x2 o-rings.



Universal Replacement Parts for Liebherr® cont.

BMF-5009768

Motor & Valve Manifold Kit

Rugged, low speed, high torque orbital motor (BMF-5009983) and 100 Bar anti-shock valve in aluminum housing (BMF-7026352). Includes x4 mounting bolts and x2 o-rings.



BMF-5009983

Hydraulic Motor

Rugged, low speed, high torque orbital motor. An excellent value offering long lasting performance at a competitive price point. For Liebherr® 5009983 or 11694657.



BMF-5009560

Hydraulic Torque Motor

Rugged, low speed, high torque orbital motor. An excellent value offering long lasting performance at a competitive price point. A direct aftermarket replacement for Liebherr® 5009560.



BMF-7013116

Sealing Ring

Seal ring for main grapple body hose connection



BMF-4600649

Grapple Fitting with sealing ring

Threaded hose fitting for hydraulic cylinder hose.



REPLACEMENT BATEMAN® PARTS

Bateman® 10y Grapple Series:

BMF-BN1244B

Aftermarket Bateman® Grapple Cylinder 3.5x4.5-27.5"

Aftermarket Bateman® Grapple Cylinder 3.5x4.5-27.5" Cylinder p/n BN1244B, 4.5" bore, 3.5" rod, 27.5" stroke, Used on 10 yard Bateman® Grapples.



REPLACEMENT BATEMAN® PARTS

Bateman® 200 Series:

P/N B4T2-125, B4T2-150, B4T2-200, B4T2-300, B5T2-100, B5T2-125, B5T2-150, B5T2-200, B5T2-300

BMF-BN1514

Aftermarket Bateman®
Grapple Cylinder 3.5x2.5-14.56"

Cylinder p/n BN1514 (former p/n LD7966), 3.5" bore, 2.5" rod, 14.56" stroke, Used on 200 series Bateman Grapples.



BMF-BN1514SK

Aftermarket Bateman®
1514 Cylinder Seal Kit

Full replacement rod & piston seal kit for Cylinder p/n BN1514



BMF-LD6074

Aftermarket Bateman®
1514 Cylinder Guard

3.5" Steel cylinder guard attachment for 200 series grapple cylinder (BMF-BN1514)



Bateman® 150 Series:

P/N B4T15-050, B4T15-075, B4T15-100, B4T15-125, B4T15-150, B5T15-075, B5T15-100, B5T15-125

BMF-BN1534

Aftermarket Bateman®
Grapple Cylinder 3x2-12.125"

Cylinder p/n BN1534 (former p/n LD7942), 3" bore, 2" rod, 12-1/8" stroke, Used on 150 series Bateman Grapples



BMF-BN1534SK

Aftermarket Bateman®
1534 Cylinder Seal Kit

Full replacement rod & piston seal kit for Cylinder p/n BN1534



BMF-LD6482

Aftermarket Bateman®
1534 Cylinder Guard

3.0" Steel cylinder guard attachment for 100 & 150 series grapple cylinder (BMF-BN1534)



Universal Replacement Parts for Bateman® Grapples

BMF-BN1900

Aftermarket Bateman®
Tine Bushing BN1900

Hardened steel tine bushing used on 200 series grapple tine to main body pivot



BMF-BN1514-5

Aftermarket Bateman® Cyl
Bushing BN1514-5

Hardened steel tine bushing used on 100 & 150 series grapple cylinder to tine connection.



BMF-BN1901

Aftermarket Bateman®
Tine Bushing BN1901

Hardened steel tine bushing used on 100 & 150 series grapple tine to main body pivot joint.



BMF-BN1514-6

Aftermarket Bateman®
Cyl Bushing BN1514-6

Hardened steel tine bushing used on 200 series grapple cylinder to tine connection



BMF-BN1244B-SK

Aftermarket Bateman®
1244 Seal Kit

Full replacement rod & piston seal kit for Cylinder p/n BN1244



Model HDMS 0,4 | 0,6 | 0,8 Grapples

BMF-6502147100

Aftermarket Fuchs® Grapple Cyl 70x50-335mm

High strength and rugged cylinder is rated at 5000psi. 70mm bore x 335mm stroke and 50mm diameter rod. Spherical bearings on cylinder and rod ends. Aftermarket replacement for Fuchs® grapple cylinder 6502147100 & 5362670010. Used on Fuchs® HDMS 0,4 / 0,6 / 0,8 grapples*. Includes protective steel shield. *Some 0,8 grapples may be equipped with an alternative 5577661352 cylinder. Users must check cylinders installed on grapple and use matching part number.



BMF-0502147035

Aftermarket Fuchs® Grapple Cylinder Cover (Protection Tube)

Used with BMF-1007030744 tine bolt. Aftermarket replacement for 1212341016. Used on HDMS 0,4 / 0,6 / 0,8



BMF-6502147003

Aftermarket Fuchs® Grapple Cylinder Barrel Assembly

Replacement Fuchs® grapple cylinder barrel. Used on cylinder P/N 6502147100/5362670010.



BMF-0502147111

Aftermarket Fuchs® Grapple Cylinder Rod Assembly

Replacement Fuchs® grapple cylinder barrel. Used on cylinder P/N 6502147100/5362670010.



BMF-1976999322

Aftermarket Fuchs® Grapple Cylinder Seal Kit

Contains all the seals required for a 6502147100 or 5362670010 cylinder rebuild. Aftermarket replacement for 1976999322.



BMF-0502147017

Aftermarket Fuchs® Gland
Replacement steel gland. Used on cylinder BMF-6502147100.



BMF-1456622360

Aftermarket Fuchs® C-clip

Replacement c-clip used to secure spherical bearing on cylinder BMF-6502147100.



BMF-1008341124

Aftermarket Fuchs® Gland Bolt

Single replacement gland bolt. Used on cylinder BMF-6502147100.



BMF-1018317030

Aftermarket Fuchs® Cover Bolt

Single replacement bolt used on protective shield of cylinder BMF-6502147100.



BMF-0502106015

Aftermarket Fuchs® Piston

Replacement steel piston. Used on cylinder BMF-6502147100.



BMF-0502079025

Aftermarket Fuchs® Bushing

Single replacement bushing used on protective shield of cylinder BMF-6502147100. Used with BMF-



BMF-1607010008

Aftermarket Fuchs® Tine zerk

Replacement grease nipple used on tine and cylinder. Aftermarket replacement for 1607010008. Used on HDMS 0,4 / 0,6 / 0,8 grapples.



BMF-1950000438

Aftermarket Fuchs® Grapple Cylinder 40/68 Spherical Bearing

Heavy duty spherical bearing. Used on BMF-6502147100 cylinder.



Universal Replacement Parts for Fuchs® cont.

BMF-0050006011

Aftermarket Fuchs® Tine Pin (Double Bolt Version)

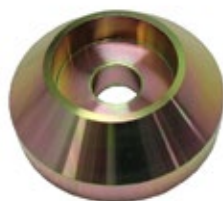
Hardened steel tine pin (Double Bolt Version). Used with BMF-0050006012 & BMF-1007030042. Aftermarket replacement for 0050006011. Used on HDMS 0,4 / 0,6 / 0,8 grapples.



BMF-0050006012

Aftermarket Fuchs® Tine Pin Cover (Double Bolt Version)

Steel cover used with BMF-0050006011. Aftermarket replacement for 0050006012. Used on HDMS 0,4 / 0,6 / 0,8 grapples.



BMF-1007030042

Aftermarket Fuchs® Tine Bolt (short version)

Bolt used to secure BMF-0050006011 tine pin. Two bolts used per pin. Aftermarket replacement for 1007030042. Used on HDMS 0,4 / 0,6 / 0,8 grapples.



BMF-6090066630

Aftermarket Fuchs® Tine Pin (Single Bolt Version)

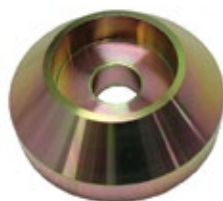
Hardened steel tine pin (Single Bolt Version). Used with BMF-0090066632 & BMF-1007030744. Aftermarket replacement for 6090066630. Used on HDMS 0,4 / 0,6 / 0,8 grapples.



BMF-0090066632

Aftermarket Fuchs® Tine Pin Cover (Single Bolt Version)

Steel cover used with BMF-6090066630. Aftermarket replacement for 0090066632. Used on HDMS 0,4 / 0,6 / 0,8 grapples.



BMF-1007030744

Aftermarket Fuchs® Tine Bolt (long version)

Bolt used to secure BMF-6090066630 tine pin. One bolt used per pin. Aftermarket replacement for 1007030744. Used on HDMS 0,4 / 0,6 / 0,8 grapples.



BMF-1212341016

Aftermarket Fuchs® Tine Hexagon Nut

Used with BMF-1007030744 tine bolt. Aftermarket replacement for 1212341016. Used on HDMS 0,4 / 0,6 / 0,8 grapples.



BMF-0052006003

Aftermarket Fuchs® Upper & Lower Cylinder Pin (L=160 mm)

Hardened steel cylinder pin. Aftermarket replacement for 0052006003. Used on HDMS 0,4 / 0,6 / 0,8 grapples.



BMF-5381620439

Aftermarket Fuchs® Clamping Bush

Hardened steel bush. Aftermarket replacement for 5381620439. Used on HDMS 0,4 / 0,6 / 0,8 grapples.



BMF-5557206032

Aftermarket Fuchs® Tine Bushing

Hardened steel tine bushing. Aftermarket replacement for 5557206032. Used on HDMS 0,4 / 0,6 / 0,8 grapples.

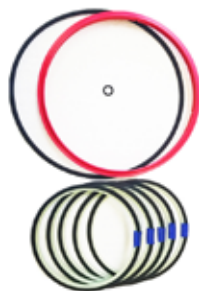


Universal Replacement Parts for Fuchs® cont.

BMF-5710656326

Aftermarket Fuchs® Rotary Union Seal Kit

Includes x5 two-piece rotary seals, x1 dirt wiper and x2 o-rings. Used on series HDMS 0.4 / 0.6 / 0.8 m³ grapple rotary unions.



BMF-5710656371

Aftermarket Fuchs® Motor Seal Kit

Includes x2 energized seals and x2 o-rings. Used on series HDMS 0.4 / 0.6 / 0.8 m³ grapple motors.



BMF-5754657800

Aftermarket Fuchs® Tine Tip

Cast steel weld on tine tip. Hardened, wear resistant steel for maximum wear life. Aftermarket replacement for 5754657800. Fits HDMS 0,4 / 0,6 / 0,8 grapples.



REPLACEMENT ROTOBEC® PARTS

Rotobec® Grapple Cylinder Replacment Parts

BMF-7001 2942

Aftermarket Rotobec® Grapple Cylinder Seal Kit

Contains all the seals for a 7001-4107 Cylinder rebuild. Aftermarket Replacement for 7001-2942.



BMF-7001 8092

Replacement Rotobec® Lock Washer

Custom machined steel lock washer. Used to secure tine bushing assembly.



BMF-7001 4612

Replacement Rotobec® Bushing

Bronze tine bushing. x2 used per tine.



BMF-7001-6045

Replacement Rotobec® Upper Cylinder Pin

Hardened steel, chrome plated pin. Used to secure cylinder barrel to grapple body. Aftermarket replacement for 7001-6045.



BMF-7000-3637

Replacement Rotobec® Lower Cylinder Pin

Hardened steel, chrome plated pin. Used to secure cylinder rod to tine. Aftermarket replacement for 7000-3637.



BMF-7001-6040

Replacement Rotobec® Tine Pin

Hardened steel, chrome plated pin. Used to secure tine to grapple body. Aftermarket replacement for 7001-6040.



Model GSH15B, GSH20B & GSH22B CAT® Grapples

BMF-211-7407

Aftermarket CAT® Grapple Cylinder 100x63x280mm

High strength and rugged cylinder is rated at 5000psi. 100mm bore x 280mm stroke and 63mm diameter rod. Spherical bearings on cylinder and rod ends. Aftermarket replacement for CAT® grapple cylinder. 211-7407. Used on GSH15B, GSH20B & GSH22B CAT® Orange Peel Grapples.



BMF-220-3585

Replacement CAT® Grapple Cylinder Barrel Assembly

Painted replacement barrel assembly. Does not include bearing or c-clip. Replacement barrel for BMF aftermarket CAT® cylinder PN: BMF-211-7407 only.



BMF-220-3586

Aftermarket CAT® Grapple Cylinder Piston Rod Assembly

Piston rod assembly. Does not include bearing or c-clip. Replacement for BMF aftermarket CAT® cylinder PN: BMF-211-7407 only.



BMF-220-3587

Replacement D-Ring Kit (supersedes CAT® No. 4C-4784)

Replacement steel piston. Used on cylinder BMF-211-7407.



BMF-220-3588

Replacement O-Ring Kit (supersedes CAT® No. 4C-8253)

Replacement for BMF aftermarket CAT® cylinder PN: BMF-211-7407 only



BMF-220-3592

Replacement O-Ring Kit (supersedes CAT® No. 4C-4782)

Replacement for BMF aftermarket CAT® cylinder PN: BMF-211-7407. Includes plug, retainer & orifice plate.



BMF-215-6728

BMF Cylinder Replacement Seal Kit

High pressure replacement seal kit for BMF aftermarket CAT® cylinder PN: BMF-211-7407 only. Contains all gland & piston seals, wipers and guide bands. Also includes improved ductile iron piston ring.



O-Ring Replacement Parts for CAT®

BMF-270-1528

Replacement O-Ring Kit (supersedes CAT® No. 4C-4782)

Kit contains 570 nitrile O-rings in the 32 most popular sizes used on Caterpillar® equipment. Comes in sturdy plastic box with transparent lid and identification sheet.



BMF-270-1533

Replacement O-Ring Kit (supersedes CAT® No. 4C-8253)

Kit contains 149 silicone O-rings in the 32 most popular sizes used on Caterpillar® equipment. Comes in sturdy plastic box with transparent lid and identification sheet.



BMF-270-1535

Replacement D-Ring Kit (supersedes CAT® No. 4C-4784)

Kit contains the 9 most popular sized D-Rings used on Caterpillar® equipment. Comes in sturdy, yellow plastic box with identification sheet.



A construction site at sunset. In the foreground, a worker in a yellow hard hat and orange safety vest stands next to a large concrete mixer. In the background, an excavator with a large bucket is positioned near scaffolding. The sky is a mix of orange, yellow, and purple, with the sun low on the horizon, creating a strong silhouette effect on the machinery and worker.

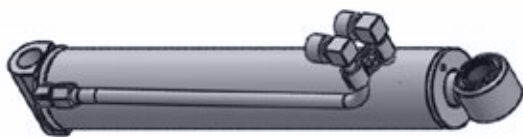
CONSTRUCTION MACHINERY

REPLACEMENT BOBCAT® CYLINDERS

Bobcat® Cylinders

BMF-6539808

Aftermarket Bobcat®
Bucket Tilt Cylinder



Weight	Rod	Bore	Stroke
45lbs	1.5in	3.25in	17.5in

Replacement bucket tilt cylinder for Bobcat® skid steer. 3.25" bore x 17.5"stroke and 1.50" diameter rod. Fits Bobcat® model number 843. Also can replace OEM part number 6592584 and B18257.

BMF-6586671

Aftermarket Bobcat®
Lift Cylinder



Weight	Rod	Bore	Stroke
29.7lbs	1.25in	2in	25in

Aftermarket replacement lift cylinder for Bobcat® skid steer. 2" bore x 25"stroke and 1.25" diameter rod. Fits Bobcat® models 742, 630, 731, 542, 533, 642, 645, 741, 743, 732, 631, 632, 643, 641, 540, 543, 730 & 530 skid steers. Replaces Bobcat® cylinders 6586671, 6592962.

BMF-6586700

Aftermarket Bobcat®
Grapple Cylinder



Weight	Rod	Bore	Stroke
16lbs	1.25in	2in	8in

Aftermarket replacement grapple cylinder for Bobcat® attachments. 2.00" bore x 8.00"stroke and 1.25" diameter rod. Cylinder used on Bobcat® grapple 66GRPL, and as outrigger stabilizer jackleg on Bobcat® stump grinder SG30.

BMF-6586991

Aftermarket Bobcat®
Tilt Cylinder



Weight	Rod	Bore	Stroke
43.6lbs	1.5in	3.25in	18.15in

Aftermarket replacement tilt cylinder for Bobcat® skid steer. 3.25" bore x 18.15"stroke and 1.5" diameter rod. Fits Bobcat® model 853 skid steer. Replaces Bobcat® cylinders 6586991 & 6539075.

BMF-6589331

Aftermarket Bobcat®
Bucket Tilt Cylinder



Weight	Rod	Bore	Stroke
35lbs	1.5in	3.0in	12.20in

Aftermarket replacement bucket-tilt cylinder for Bobcat® skid steer & compact track loader. 3.0" bore x 12.2"stroke and 1.5" diameter rod. Fits Bobcat® model numbers 533 & 543.

BMF-6597350

Aftermarket Bobcat®
Blade Cylinder



Weight	Rod	Bore	Stroke
53lbs	1.75in	3.5in	7.25in

Aftermarket replacement blade cylinder for Bobcat® mini excavator. 3.5" bore x 7.25"stroke and 1.75" diameter rod. Fits Bobcat® model numbers 331 329 and 334 (G) Mini Excavators.

BMF-6597371

Replacement Bobcat®
Blade Cylinder



Weight	Rod	Bore	Stroke
41 lbs	1.5in	2.75in	7.68in

Aftermarket replacement blade cylinder for Bobcat® mini excavator. 2.75" bore x 7.68"stroke and 1.50" diameter rod. Fits Bobcat® model 325, 328, 425 & 428 mini excavators.

Bobcat® Cylinders

BMF-6673608

Aftermarket Bobcat®
Snow Blade Cylinder



Weight	Rod	Bore	Stroke
14 lbs	1.25in	2in	9.63in

Aftermarket replacement snow blade cylinder for Bobcat® skid steers and track loaders. 2" bore x 9.63"stroke and 1.25" diameter rod.

BMF-6804630

Aftermarket Bobcat®
Tilt Cylinder



Weight	Rod	Bore	Stroke
44.6lbs	1.5in	3.5in	14.5in

Aftermarket replacement bucket-tilt cylinder for Bobcat® skid steer & compact track loader. 3.5" bore x 14.5"stroke and 1.5" diameter rod. Fits Bobcat® model numbers S130, T140, 753, 773, 7753.

BMF-6804674

Aftermarket Bobcat®
Tilt Cylinder



Weight	Rod	Bore	Stroke
50.6lbs	1.62in	3.5in	18.19in

Aftermarket replacement bucket-tilt cylinder for Bobcat® skid steer & compact track loader. 3.5" bore x 18.19"stroke and 1.62" diameter rod. Fits Bobcat® model numbers 863, A220, T200.

BMF-6804692

Aftermarket Bobcat®
Tilt Cylinder



Weight	Rod	Bore	Stroke
41.4lbs	1.5in	3.25in	14.5in

Aftermarket replacement bucket-tilt cylinder for Bobcat® skid steer & compact track loader. 3.25" bore x 14.5"stroke and 1.5" diameter rod. Fits Bobcat® model numbers 653, 751, 753.

BMF-6809501

Aftermarket Bobcat®
Angle Control Cylinder



Weight	Rod	Bore	Stroke
14 lbs	1.25in	2in	5in

Aftermarket replacement hydraulic angle control cylinder for many Bobcat® compact tractor attachments including the angle broom, snow blade, soil conditioner, and combination bucket. 2.0" bore x 5.0"stroke and 1.25" diameter rod. Fits Bobcat® model numbers CT1021, CT1025, CT2025, CT2035, CT2040, CT2535, CT2540, CT4045, CT4050, CT4058, CT5545, CT5550, CT5555, CT5558.

BMF-6810611

Aftermarket Bobcat®
Attachment Cylinder



Weight	Rod	Bore	Stroke
15.8lbs	1in	1-3/4in	6-3/4in

Aftermarket replacement attachment cylinder for Bobcat® skid steer & compact track loader. Used on Bob-Tach® system. 1-3/4" bore x 6-3/4"stroke and 1" diameter rod. Induction hardened chrome rod & rugged ductile iron gland. Fits Bobcat® model numbers S100, S130, S150, S160, S175, S185, S205, S220, S250, S300, S330, T110, T140, T180, T190, T200, T250, T300, T320, 773.

BMF-6810613

Aftermarket Bobcat®
Lift Cylinder



Weight	Rod	Bore	Stroke
16lbs	1.0in	3in	8.5in

Aftermarket replacement lift cylinder for Bobcat® equipment. 2.0" bore x 8.5"stroke and 1.0" diameter rod.

AFTERMARKET BOBCAT® CYLINDERS

Bobcat® Cylinders

BMF-6811612

Aftermarket Bobcat®
RH Tilt Cylinder



Weight	Rod	Bore	Stroke
41.8lbs	1.625in	2.75in	17.75in

Aftermarket replacement right hand bucket-tilt cylinder for Bobcat® skid steer & compact track loader. 2.75" bore x 17.75"stroke and 1.625" diameter rod. Fits Bobcat® model numbers 873 & 883. Also can replace OEM part number 6805512. Cylinder does not include transfer oil tube.

BMF-6811614

Aftermarket Bobcat®
LH Tilt Cylinder



Weight	Rod	Bore	Stroke
44lbs	1.625in	2.75in	17.75in

Aftermarket replacement LH tilt cylinder for Bobcat® skid steer. 2.75" bore x 17.75"stroke and 1-5/8" diameter rod. Fits Bobcat® models 873 (s/n 514127006-later, 514222393-later, 517911001-later) & 883. Replaces Bobcat® cylinders 6811614 & 6805511.

BMF-6811994

Aftermarket Bobcat®
Lift Cylinder



Weight	Rod	Bore	Stroke
42lbs	1.5in	2.25in	27.88

Aftermarket replacement lift/arm cylinder for Bobcat® skid steer & compact track loader. 2.25" bore x 27.88"stroke and 1.5" diameter rod. Fits Bobcat® model number S150, S160, T180, and 763 with serial numbers after 51263000 & 512452000. Replaces OEM part numbers 6811994 & 6809207

BMF-6811996

Aftermarket Bobcat®
Lift Cylinder



Weight	Rod	Bore	Stroke
58lbs	1.5in	2.25in	27.88

Aftermarket replacement lift cylinder for Bobcat® skid steer. 2.75" bore x 31"stroke and 1.5" diameter rod. Fits Bobcat® models 873 & 883.

BMF-6812504

Aftermarket Bobcat®
Lift/Arm Cylinder



Weight	Rod	Bore	Stroke
44lbs	1.5in	2.25in	27.88in

Aftermarket replacement lift/arm cylinder for Bobcat® skid steer & compact track loader. 2.25" bore x 27.88"stroke and 1.5" diameter rod. Fits Bobcat® model number 753 & Bobcat® model number 763 S/N 512262999 & Below, 512451999 & Below, 512620001 & Above.

BMF-6812771

Aftermarket Bobcat®
Lift Cylinder



Weight	Rod	Bore	Stroke
30lbs	1.25in	2in	21.92in

Aftermarket replacement lift cylinder for Bobcat® skid steer & compact track loader. 2" bore x 21.92"stroke and 1.25" diameter rod. Fits Bobcat® model numbers MT50, 463 & S70.

BMF-6817310

Aftermarket Bobcat®
Lift Cylinder



Weight	Rod	Bore	Stroke
59.4lbs	1.625in	3.0in	25in

Aftermarket replacement lift cylinder for Bobcat®. 3" bore x 25"stroke and 1.625" diameter rod. Retracted 38.25". Fits Bobcat® Skid Steer & Track Loaders models S250, S300, T300 & A300.

Bobcat® Cylinders

BMF-7010719

Replacement Bobcat®
Clamp Cylinder

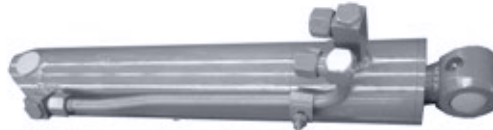


Weight	Rod	Bore	Stroke
80lbs	2in	3.5in	26in

Aftermarket replacement clamp/thumb cylinder for Bobcat® mini excavator. 3.50" bore x 26"stroke and 2.00" diameter rod.

BMF-7104437

Aftermarket Bobcat®
Tilt Cylinder



Weight	Rod	Bore	Stroke
38lbs	1.5in	3.25in	14.5in

Aftermarket replacement bucket-tilt cylinder for Bobcat® skid steer & compact track loader. 3.25" bore x 14.5"stroke and 1.5" diameter rod. Fits Bobcat® model numbers 630, 631, 632, 641, 642, 643, 645, 730, 731, 732, 741, 742, 743.

BMF-7106456

Aftermarket Bobcat®
Lift Cylinder



Weight	Rod	Bore	Stroke
60.5lbs	1-5/8in	3in	25.5in

Aftermarket replacement lift cylinder for Bobcat®. 3" bore x 25.46"stroke and 1.625" diameter rod. Induction hardened chrome rod & rugged ductile iron gland. Fits Bobcat® Skid Steer, All Wheel Steer, & Track Loader model numbers S250, S300, T300, T320, A300.

BMF-7117174

Aftermarket Bobcat®
Bucket-Tilt Cylinder



Weight	Rod	Bore	Stroke
30.8lbs	1-3/8in	2-3/4in	13-1/8in

Aftermarket replacement bucket-tilt cylinder for Bobcat® skid steer & compact track loader. 2-3/4" bore x 13-1/8"stroke and 1-3/8" diameter rod. Induction hardened chrome rod & rugged ductile iron gland. Fits Bobcat® model numbers 773, S150, S160, S175, S185, S205, T180, T190.

BMF-7117667

Aftermarket Bobcat®
Lift Cylinder



Weight	Rod	Bore	Stroke
44lbs	1.5in	2.5in	23-13/16in

Aftermarket replacement lift cylinder for Bobcat® skid steer & compact track loader. 2.5" bore x 23-13/16"stroke and 1.5" diameter rod. Induction hardened chrome rod & rugged ductile iron gland. Fits Bobcat® model numbers 773, S175, S185, S205, T190.

BMF-7121965

Aftermarket Bobcat®
Grapple Or Swing Cylinder



Weight	Rod	Bore	Stroke
18 lbs	1.25in	2.25in	9.6in

Aftermarket replacement grapple/swing cylinder for Bobcat® attachments and backhoe. 2.25" bore x 9.63"stroke and 1.25" diameter rod.

BMF-7136459

Aftermarket Bobcat®
Grapple Cylinder



Weight	Rod	Bore	Stroke
14 lbs	1.25in	2.0in	6in

Aftermarket replacement attachment cylinder for Bobcat® brand industrial & root grapple. 2.0" bore x 6"stroke and 1.25" diameter rod.

AFTERMARKET BOBCAT® CYLINDERS

Bobcat® Cylinders

BMF-7142833

Aftermarket Bobcat®
Tilt Cylinder



Weight	Rod	Bore	Stroke
29.7lbs	1.25in	2in	26.5in

Aftermarket replacement tilt cylinder for Bobcat® skid steer. 2" bore x 26.5"stroke and 1.25" diameter rod. Fits Bobcat® models 653, 751, 753 skid steers. Replaces Bobcat® cylinders 7142833, 6586575 & 6531324.

BMF-7147447

Aftermarket Bobcat®
Bucket Cylinder



Weight	Rod	Bore	Stroke
59.8lbs	2in	3.25in	18.31in

Aftermarket replacement bucket cylinder for Bobcat® mini excavator. 3.25" bore x 18.31"stroke and 2.00" diameter rod. Fits Bobcat® model numbers 329, 334, 430 Mini Excavators.

BMF-7148240

Replacement Bobcat® Bucket
Cylinder 3.0x23.58-1.75



Weight	Rod	Bore	Stroke
58lbs	1.75in	3.0in	23.62in

Aftermarket replacement bucket cylinder for Bobcat® mini excavator. 3.00" bore x 23.62"stroke and 1.75" diameter rod. Fits Bobcat® model numbers 331.

BMF-7152121

Aftermarket Bobcat®
Lift Cylinder



Weight	Rod	Bore	Stroke
46.2lbs	1.5in	2.25in	27.5in

Aftermarket replacement lift cylinder for Bobcat® skid steer. 2.25" bore x 27.5"stroke and 1.5" diameter rod. Fits Bobcat® model S510, S550 & T550 skid steer.

BMF-7152266

Aftermarket Bobcat®
Lift Cylinder



Weight	Rod	Bore	Stroke
50lbs	1.625in	2.75in	21.25in

Replacement lift cylinder for Bobcat® skid steer & track loader. 2.75" bore x 21.25"stroke and 1.63" diameter rod. Fits Bobcat® model numbers S530, S570, S590 & T590.

BMF-7156133

Replacement Bobcat®
Boom Cylinder



Weight	Rod	Bore	Stroke
70lbs	1.75in	3in	25in

Aftermarket replacement boom cylinder for Bobcat® mini excavator. 3.00" bore x 25"stroke and 1.75" diameter rod. Induction hardened chrome rod & corrosion resistant aluminum gland. Fits Bobcat® model 329, 331, 331E, 334, 430 & 334G mini excavators.

BMF-7160395

Aftermarket Bobcat®
Attachment Cylinder
Skid Steer



Weight	Rod	Bore	Stroke
18lbs	1.00in	1.75in	6.75in

Aftermarket replacement attachment cylinder (7366597) for Bobcat® skid steer & compact track loader. Used on Bob-Tach® system. 1.75" bore x 6.75"stroke and 1" diameter rod. Fits Bobcat® model numbers A300, S150, S160, S175, S185, S205, S220, S250, S300, S330, T140, T180, T190, T200, T250, T300, T320.

BMF-7161189

Aftermarket Bobcat®
Arm Cylinder



Weight	Rod	Bore	Stroke
65lbs	1.75in	3in	23.9in

"Aftermarket replacement arm cylinder for Bobcat® mini excavator. 3" bore x 23.9"stroke and 1.75" diameter rod. Fits Bobcat® models E32, E34, E35 & E37."

Bobcat® Cylinders

BMF-7165711

Aftermarket Bobcat®
Blade Cylinder



Weight	Rod	Bore	Stroke
33.2lbs	1.5in	3in	7-5/8in

Aftermarket replacement blade cylinder for Bobcat® mini excavator.
3" bore x 7-5/8"stroke and 1.5" diameter rod. Fits Bobcat® models E45, E50, E55 Mini Excavators.

BMF-7166323

Aftermarket Bobcat®
Bucket Cylinder



Weight	Rod	Bore	Stroke
70.15lbs	2in	3.25in	20.63in

Aftermarket replacement bucket cylinder for Bobcat® mini excavator.
3.25" bore x 20.63"stroke and 2.00" diameter rod. Fits Bobcat® model numbers E50 , E55 Mini Excavators.

BMF-7166180

Aftermarket Bobcat®
Arm Cylinder



Weight	Rod	Bore	Stroke
106lbs	2.25in	3.5in	29.82in

Aftermarket replacement arm cylinder for Bobcat® mini excavator.
3.5" bore x 29.82"stroke and 2.25" diameter rod. Fits Bobcat® Models E50 & E55."

BMF-7168224

Aftermarket Bobcat®
Arm Cylinder



Weight	Rod	Bore	Stroke
35lbs	1.5in	2.735in	16.75in

Aftermarket replacement arm cylinder for Bobcat® mini excavator.
2.375" bore x 16.75"stroke and 1.5" diameter rod. Fits Bobcat® Mini Excavator models 342, E16, E19, E20.

BMF-7168435

Replacement Bobcat® Boom
Cylinder 2.75x17.49-1.625



Weight	Rod	Bore	Stroke
42 lbs	1.62in	2.75in	17.5in

Aftermarket replacement boom cylinder for Bobcat® mini excavator. 2.75" bore x 17.5"stroke and 1.62" diameter rod.
Induction hardened chrome rod & corrosion resistant aluminum gland. Fits Bobcat® model numbers 324.

BMF-7175041

Aftermarket Bobcat®
Bucket Cylinder



Weight	Rod	Bore	Stroke
55.2lbs	1.75in	3in	20.63in

Aftermarket replacement bucket cylinder for Bobcat® mini excavator.
3.00" bore x 20.63"stroke and 1.75" diameter rod. Fits Bobcat® model numbers E42 , E45 Mini Excavators.

BMF-7191555

Aftermarket Bobcat®
Boom Cylinder



Weight	Rod	Bore	Stroke
67.2lbs	1-3/4in	3in	26-3/8in

Aftermarket replacement boom cylinder for Bobcat® mini excavator. 3" bore x 26-3/8"stroke and 1-3/4" diameter rod.
Induction hardened chrome rod & corrosion resistant aluminum gland. Fits Bobcat® model numbers E32, E32i, E35, E35i.

BMF-7192624

Replacement Bobcat®
Boom Cylinder



Weight	Rod	Bore	Stroke
125lbs	2in	3.75in	27.5in

Aftermarket replacement boom cylinder for Bobcat® mini excavator. 3.75" bore x 27.5"stroke and 2.00" diameter rod.
Induction hardened chrome rod & corrosion resistant aluminum gland. Fits Bobcat® model E42 & E45 mini excavators

AFTERMARKET BOBCAT® CYLINDERS

Bobcat® Cylinders

BMF-7197737

Aftermarket Bobcat®
Clamp Cylinder



Weight	Rod	Bore	Stroke
21.6lbs	1.25in	2in	15in

Aftermarket replacement thumb clamp cylinder for Bobcat® mini excavator. 2" bore x 15"stroke and 1.25" diameter

BMF-7199435

Aftermarket Bobcat®
Clamp Cylinder



Weight	Rod	Bore	Stroke
23.1lbs	1.25in	2.25in	15in

Aftermarket replacement thumb clamp cylinder for Bobcat® mini excavator.
2.25" bore x 15"stroke and 1.25" diameter rod. Fits Bobcat® model E32 Mini Excavator.

BMF-7201732

Replacement Bobcat® Blade
Cylinder 3.75x7.69-2.0



Weight	Rod	Bore	Stroke
55 lbs	2.0in	3.75in	7.62in

Aftermarket replacement blade cylinder for Bobcat® mini excavator. 3.75" bore x 7.62"stroke and 2.00" diameter rod.

BMF-7203494

Aftermarket Bobcat®
Lift Cylinder



Weight	Rod	Bore	Stroke
12.1lbs	1.0in	1.5in	6.22in

Aftermarket replacement lift cylinder for Bobcat® skid steer & compact track loader.
3" bore x 26"stroke and 1.75" diameter rod. Fits Bobcat® model numbers A770, S750, S770, T750 and T770.

BMF-7206476

Aftermarket Bobcat®
Boom Cylinder



Weight	Rod	Bore	Stroke
52lbs	1.63in	2.75in	21.5in

"Aftermarket replacement boom cylinder for Bobcat® mini excavator. 2.75" bore x 21.5"stroke and 1.63" diameter rod.
Fits Bobcat® models E25, E26

BMF-7208419

Aftermarket Bobcat®
Bucket-Tilt Cylinder



Weight	Rod	Bore	Stroke
39lbs	1.5in	3in	15in

Aftermarket replacement bucket-tilt cylinder for Bobcat® skid steer & compact track loader. 3" bore x 15"stroke and 1.5" diameter rod. Induction hardened chrome rod & rugged ductile iron gland. Fits Bobcat® model numbers S220, S250, S300, S330, T250, T300, T320.

BMF-7212595

Aftermarket Bobcat®
Grapple Cylinder



Weight	Rod	Bore	Stroke
20.7lbs	1.25in	2.5in	8in

Aftermarket replacement attachment cylinder for Bobcat® brand industrial & root grapple. 2.5" bore x 8"stroke and 1.5" diameter rod. Fits Bobcat® Grapple (Ind Grapple Bkt 62" AFOS, 68" AFOR, 74" AFOH, 80" AFOP) (Ind Grpl Fork 66 AFOU, 78 AEDF) (Root Grpl 66 AFOT, 72 AE6H, 82 AFON)

BMF-7235736

Aftermarket Bobcat®
(right) Tilt Cylinder



Weight	Rod	Bore	Stroke
41.4lbs	1.5in	3in	13.75in

Aftermarket replacement (right) bucket-tilt cylinder for Bobcat® skid steer & compact track loader. 3.00" bore x 13.75"stroke and 1.5" diameter rod. Fits Bobcat® model numbers S630, S650, S750, S770, T630, T650, T750, T770.

Bobcat® Cylinders

BMF-7235738

Aftermarket Bobcat®
(left) Tilt Cylinder



Weight	Rod	Bore	Stroke
41.4lbs	1.5in	3in	13.75in

Aftermarket replacement (left) bucket-tilt cylinder for Bobcat® skid steer & compact track loader. 3.00" bore x 13.75"stroke and 1.5" diameter rod. Fits Bobcat® model numbers S630, S650, S750, S770, T630, T650, T750, T770.

BMF-7245374

Aftermarket Bobcat®
Lift Cylinder



Weight	Rod	Bore	Stroke
82lbs	2in	3.25in	26in

Aftermarket replacement lift cylinder for Bobcat® skid steer & compact track loader. 3.25" bore x 26"stroke and 2" diameter rod. Fits Bobcat® model numbers A770, S740, S750, S770, T740, T750 and T770.

BMF-7250302

Aftermarket Bobcat®
Lift Cylinder



Weight	Rod	Bore	Stroke
80lbs	1.75in	2.5in	31.22in

Aftermarket replacement lift cylinder for Bobcat® skid steer & compact track loader. 2.5" bore x 31.22"stroke and 1.75" diameter rod. Fits Bobcat® model numbers S630 and T630.

BMF-7254098

Aftermarket Bobcat®
Clamp Cylinder



Weight	Rod	Bore	Stroke
42lbs	1.50in	2.75in	18.75in

Aftermarket replacement thumb clamp cylinder for Bobcat® mini excavator. 2.75" bore x 18.75"stroke and 1.50" diameter rod. Fits Bobcat® model E42, E45, E50 and E55 Mini Excavators.

BMF-7256068

Aftermarket Bobcat®
Cushioned Lift Cylinder



Weight	Rod	Bore	Stroke
50lbs	1.65in	2.75in	21.25in

Replacement (cushioned) lift cylinder for Bobcat® skid steer & track loader. 2.75" bore x 21.25"stroke and 1.63" diameter rod. Fits Bobcat® model numbers S530, S570, S590, T590.

BMF-7256566

Aftermarket Bobcat®
Lift Cylinder



Weight	Rod	Bore	Stroke
75lbs	1.75in	2.50in	33.87in

Aftermarket replacement lift cylinder for Bobcat® skid steer. 2.50" bore x 33.87"stroke and 1.75" diameter rod. Fits Bobcat® model number S360 skid steer.

BMF-7271199

Aftermarket Bobcat®
Grease Cylinder



Weight	Rod	Bore	Stroke
9lbs	1.25in	1.25in	NA

Aftermarket replacement grease cylinder used for track tensioning on Bobcat® equipment.

BMF-7306075

Aftermarket Bobcat®
Thumb Cylinder



Weight	Rod	Bore	Stroke
45lbs	2in	3.25in	26in

Aftermarket replacement thumb clamp cylinder for Bobcat® attachment. 3.25" bore x 26"stroke and 2" diameter rod. Fits on Mini Excavator models E85 and E88.

AFTERMARKET BOBCAT® CYLINDERS

Bobcat® Cylinders

BMF-7323801

Replacement Bobcat®
Lift Cylinder



Weight	Rod	Bore	Stroke
49 lbs	1.5in	2.25in	27.5in

Replacement lift cylinder for Bobcat® skid steer & track loader. 2.25" bore x 27.5"stroke and 1.5" diameter rod. Fits Bobcat® model numbers S510, S550 & T550.

BMF-7338638

Aftermarket Bobcat®
Tilt Cylinder



Weight	Rod	Bore	Stroke
32lbs	1.5in	2.75in	12.88in

Aftermarket replacement bucket-tilt cylinder for Bobcat® skid steer & compact track loader. 2.75" bore x 12.88"stroke and 1.5" diameter rod. Fits Bobcat® model numbers S530, S570, S590, T590, S510, S550, S595, T550, T595.

BMF-7362530

Aftermarket Bobcat®
Power "Bob-Tach"
Cylinder



Weight	Rod	Bore	Stroke
12.1lbs	1.0in	1.5in	6.22in

Previous part number was 7307224. This part is the direct replacement. Aftermarket replacement Bobcat® Power "Bob-Tach" Cylinder used on skid steer & track loaders. 1.5" bore x 6.22"stroke and 1.0" diameter rod. Fits Bobcat® models S450, S510, S530, S550, S570, S590, S595, S630, S650, S740, S750, S770, S850, T450, T550, T590, T595, T630, T650, T740, T750, T770 & T870.

BMF-7362657

Aftermarket Bobcat®
Tilt Cylinder



Weight	Rod	Bore	Stroke
35lbs	40mm	70mm	13in

Replacement bucket tilt cylinder for Bobcat® skid steer. 70mm bore x 13"stroke and 40mm diameter rod. Fits Bobcat® model numbers S530, S570, S590 & T590.

BMF-7365351

Aftermarket Bobcat®
Power "Bob-Tach"
Cylinder



Weight	Rod	Bore	Stroke
12.1lbs	1.0in	1.75in	6.22in

Previous part number was 7227463. This part is the direct replacement. Aftermarket replacement Bobcat® Power "Bob-Tach" Cylinder used on skid steer & track loaders. 1.75" bore x 6.22"stroke and 1.0" diameter rod. Fits Bobcat® models S450, S510, S530, S550, S570, S590, S595, S630, S650, S740, S750, S770, S850, T450, T550, T590, T595, T630, T650, T740, T750, T770, T870.

BMF-7426745

Aftermarket Bobcat®
Boom Cylinder



Weight	Rod	Bore	Stroke
72 lbs	1.75"	3.00"	26.38"

Aftermarket replacement boom cylinder for Bobcat® mini excavator. 3.00" bore x 26.38"stroke and 1.75" diameter rod. Fits Bobcat® models E32, E32i, E35i (B3Y211001 & Above), E34, E35Z & E37. Previous part number was 7267330

Skid Steers / Wheel Loader / Mini Excavator

BMF-V0631-74100

Aftermarket Kubota®
LH Bucket Tilt Cylinder



Weight	Rod	Bore	Stroke
49.5lbs	40mm	70mm	387mm

Aftermarket LH bucket tilt cylinder for Kubota® skid steer loader. 70mm bore x 387mm stroke and 40mm diameter rod. Fits Kubota® model numbers SVL95-2S & SVL95-2SC.

BMF-V0631-74200

Aftermarket Kubota®
RH Bucket Tilt Cylinder



Weight	Rod	Bore	Stroke
49.5lbs	40mm	70mm	387mm

Aftermarket RH bucket tilt cylinder for Kubota® skid steer loader. 70mm bore x 387mm stroke and 40mm diameter rod. Fits Kubota® model numbers SVL95-2S & SVL95-2SC.

BMF-V0611-73100-73200

Aftermarket Kubota®
Universal Boom Lift Cylinder



Weight	Rod	Bore	Stroke
78.1lbs	45mm	75mm	775mm

Aftermarket replacement universal boom lift cylinder for Kubota® skid steer & compact track loader. 75mm bore x 775mm stroke and 45mm diameter rod. Fits Kubota® models SVL90, SVL90-2, SVL90-2C, SVL90C, SVL95-2S & SVL95-2SC skid steers.



AFTERMARKET CAT® CYLINDERS

Cat® Skid Steers / Wheel Loaders

BMF-293-5711

Aftermarket CAT® RH
Tilt Cylinder



Weight	Rod	Bore	Stroke
37.4lbs	35mm	75mm	392mm

Aftermarket RH tilt cylinder for CAT® skid steer loader. 75mm bore x 392mm stroke and 35mm diameter rod. Fits CAT® model numbers 246D, 256C, 262C, 262C2, 262D, 272C, 272, 277C, 279C, 279C, 279C2, 287C, 287C2, 289C, 289C2, 297C, 299C, 299D, 246C, 272DC, 277C2, 279S, 287D, 289D, 297D2 & 299D2.

BMF-293-5712

Aftermarket CAT® LH
Tilt Cylinder



Weight	Rod	Bore	Stroke
37.4lbs	35mm	75mm	392mm

Aftermarket LH tilt cylinder for CAT® skid steer loader. 75mm bore x 392mm stroke and 35mm diameter rod. Fits CAT® model numbers 246D, 256C, 262C, 262C2, 262D, 272C, 272, 277C, 279C, 279C, 279C2, 287C, 287C2, 289C, 289C2, 297C, 299C, 299D, 246C, 272DC, 277C2, 279S, 287D, 289D, 297D2 & 299D2.

BMF-293-6264

Aftermarket CAT®
Bucket Cylinder



Weight	Rod	Bore	Stroke
15 lbs	30mm	50mm	225mm

Aftermarket bucket cylinder for CAT® skid steer loader. 50mm bore x 225mm stroke and 30mm diameter rod. Fits CAT® model numbers 904B 904H, 216 216B 216B3 226 226B 226B3 228 232 232B 236 236B 236B3 236D 242 242B 242B3 242D 246 246B 246C 246D 247 247B 247B3 248 248B 252 252B 252B3 256C 257 257B 257B3 257D 259B3 259D 262 262B 262C 262C2 262D 267 267B 268B 272C 272D 272D XHP 272D2 272D2 XHP 277 277B 277C 277C2 277D 279C 279C2 279D 287 287B 287C 287C2 287D 289C 289C2 289D 297C 297D 297D XHP 297D2 297D2 XHP 299C 299D 299D XHP 299D2 299D2 XHP

BMF-378-7963

Aftermarket CAT® RH
Bucket Tilt Cylinder



Weight	Rod	Bore	Stroke
37lbs	35mm	70mm	353mm

Aftermarket RH bucket tilt cylinder for CAT® skid steer loader. 70mm bore x 353mm stroke and 35mm diameter rod. Fits CAT® model numbers 236D3 236D 242D 242D3 257D 257D3 259D 259D3

BMF-378-7964

Aftermarket CAT® LH
Bucket Tilt Cylinder



Weight	Rod	Bore	Stroke
37lbs	35mm	70mm	353mm

Aftermarket LH bucket tilt cylinder for CAT® skid steer loader. 70mm bore x 353mm stroke and 35mm diameter rod. Fits CAT® model numbers 236D3 236D 242D 242D3 257D 257D3 259D 259D3

BMF-562-2800

Aftermarket CAT®
Bucket Cylinder



Weight	Rod	Bore	Stroke
21bs	30mm	60mm	200mm

Aftermarket bucket cylinder for CAT® skid steer loader. 60mm bore x 200mm stroke and 30mm diameter rod. Fits CAT® model numbers 904B-904H, 246 236 248 216B 216B3 226B 226B3 232B 236B 236B3 236D 242B 242B3 242D 246C 246D 247B 247B3 248B 252 252B 252B3 256C 257B 257B3 257D 259B3 259D 262 262C 262C2 262D 267B 268B 272C 272D 272D XHP 272D2 272D2 XHP 277B 277C 277C2 277D 279C 279C2 279D 287 287B 287C 287C2 287D 289C 289C2 289D 297C 297D 297D XHP 297D2 297D2 XHP 299C 299D 299D XHP 299D2 299D2 XHP and TH255C

Cat® Skid Steers / Wheel Loaders

BMF-566-0409

Aftermarket CAT® Multipurpose Bucket Cylinder

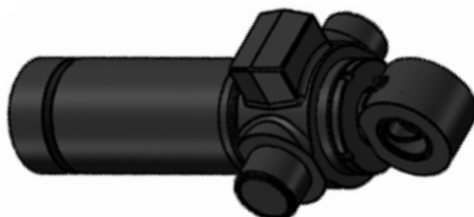


Weight	Rod	Bore	Stroke
19.5 lbs	30mm	60mm	200mm

Aftermarket multipurpose bucket cylinder for CAT® equipment. 60mm bore x 200mm stroke and 30mm diameter rod. Fits CAT® model numbers 216, 216B, 216C, 226, 226B, 226C, 226D, 226D3, 228, 232, 232B, 232C, 232D, 232D3, 236, 236B, 236D, 239D, 242, 242B, 242C, 242D, 246, 246B, 246C, 246D, 247, 247B, 247C, 248, 248B, 249D, 252, 252B, 256C, 257, 257B, 257C, 257D, 259B, 259D, 262, 262B, 262C, 262D, 267, 267B, 268B, 270, 272C, 272D, 272D3, 275, 277, 277B, 277C, 277D, 279C, 279D, 285, 287, 287B, 287C, 287D, 289C, 289D, 297C, 297D, 299C, 299D and 299D3 Skid Steers, 904B and 904H Wheel Loaders, TH255 Telehandler (Jlg), TH255C Telehandlers.

BMF-604-9010

Aftermarket CAT® Swing Cylinder



Weight	Rod	Bore	Stroke
83 bs	50mm	100mm	254mm

Aftermarket swing cylinder for CAT® equipment. 50mm bore x 254mm stroke and 100mm diameter rod. Fits CAT® model numbers 415, 415F, 416, 416E, 416F, 420, 420E, 420F, 422E, 422F, 427, 427F, 428, 428E, 428F, 430, 430E, 430F, 432, 432E, 432F, 434, 434E, 434F, 442E, 442F, 444, 444E and 444F Backhoes, 527 and 527B Skidders.

AFTERMARKET TAKEUCHI® CYLINDERS

Takeuchi® Lift, Hitch, Thumb, Boom Cylinders

BMF-1900132400

Aftermarket Takeuchi®
Hitch Cylinder



Weight	Rod	Bore	Stroke
25.08lbs	25mm	40mm	175mm

Aftermarket replacement quick attach hitch cylinder for Takeuchi® skid steer. 40mm bore x 175mm stroke and 25mm diameter rod. Fits Takeuchi® models TL6R, TL10 (CR), TL10 (CRH), TL12, TL12 (CR), TL12 (CRH), TL12R2 (CRH), TL230, TL230 (A), TL240, TL240 (CR), TL240 (CRH), TL250, TL250 (CR), TL250 (CRH). Replaces Takeuchi® cylinders 1900132400, 1900120500 & 1900100700.

BMF-1900002400

Aftermarket Takeuchi®
Thumb Cylinder



Weight	Rod	Bore	Stroke
39.6lbs	1.5in	2.25in	6.22in

Aftermarket replacement thumb cylinder for Takeuchi® mini excavator. 2.25" bore x 21.46" stroke and 1.50" diameter rod. Fits Takeuchi® models TB135, TB138 & TB235.

BMF-1900002900

Aftermarket Takeuchi®
Thumb Cylinder



Weight	Rod	Bore	Stroke
63.8lbs	1.75in	3 in	27.26in

Aftermarket replacement thumb cylinder for Takeuchi® mini excavator. 3.00" bore x 27.26" stroke and 1.75" diameter rod. Fits Takeuchi® models TB280FR & TB290.

BMF-1900081800

Aftermarket Takeuchi®
Lift Cylinder



Weight	Rod	Bore	Stroke
44lbs	40mm	65mm	475mm

Aftermarket replacement boom lift arm cylinder for Takeuchi® mini excavator. 65mm bore x 704mm stroke and 40mm diameter rod. Fits Takeuchi® model TL130.

BMF-1900112800

Aftermarket Takeuchi®
Boom Cylinder



Weight	Rod	Bore	Stroke
149lbs	60mm	100mm	710mm

Aftermarket Boom cylinder for Takeuchi® mini excavator. 100mm bore x 710mm stroke and 60mm diameter rod. Fits Takeuchi® model number TB260.

BMF-1900124500

Aftermarket Takeuchi®
Lift Cylinder



Weight	Rod	Bore	Stroke
61lbs	40mm	65mm	610mm

Aftermarket lift cylinder for Takeuchi® track loader. 65mm bore x 610mm stroke and 40mm diameter rod. Fits Takeuchi® model number TL6R.

Takeuchi® Bucket Cylinders

BMF-1900120300

Aftermarket Takeuchi® Bucket LH

Replacement LH bucket cylinder for Takeuchi® skid steer. 75mm bore x 540mm stroke and 45mm diameter rod. Fits Takeuchi® model number TL12V2.



Weight	Rod	Bore	Stroke
70bs	45mm	75mm	540mm

BMF-1900120400

Aftermarket Takeuchi® Bucket RH

Replacement RH bucket cylinder for Takeuchi® skid steer. 75mm bore x 540mm stroke and 45mm diameter rod. Fits Takeuchi® model number



Weight	Rod	Bore	Stroke
70bs	45mm	75mm	540mm

BMF-1900120700

Aftermarket Takeuchi® Bucket LH

Aftermarket replacement LH bucket tilt cylinder for Takeuchi® skid loader. 470mm bore x 470mm stroke and 40mm diameter rod.



Weight	Rod	Bore	Stroke
60lbs	40mm	70mm	470in

BMF-1900120800

Aftermarket Takeuchi® Bucket RH

Aftermarket replacement RH bucket tilt cylinder for Takeuchi® skid loader. 70mm bore x 470mm stroke and 40mm diameter rod.



Weight	Rod	Bore	Stroke
60lbs	40mm	70mm	470mm

BMF-1900124300

Aftermarket Takeuchi® Bucket RH

Aftermarket replacement RH bucket tilt cylinder for Takeuchi® skid loader. 65mm bore x 443.8mm stroke and 35mm diameter rod. Fits Takeuchi® model number TL6R.



Weight	Rod	Bore	Stroke
45lbs	35mm	65mm	443.8mm

BMF-1900124400

Aftermarket Takeuchi® Bucket LH

Aftermarket replacement LH bucket tilt cylinder for Takeuchi® skid loader. 65mm bore x 443.8mm stroke and 35mm diameter rod. Fits Takeuchi® model number TL6R.



Weight	Rod	Bore	Stroke
45lbs	35mm	65mm	443.8mm

BMF-1900132000

Aftermarket Takeuchi® Bucket LH Cylinder

Aftermarket replacement LH bucket tilt cylinder for Takeuchi® skid loader. 65mm bore x 475mm stroke and 35mm diameter rod. Fits Takeuchi® models TL8, TL130 & TL230. Replaces Takeuchi® cylinders 1900081400 & 1900132000.



Weight	Rod	Bore	Stroke
44lbs	35mm	65mm	475mm

BMF-1900132100

Aftermarket Takeuchi® Bucket RH Cylinder

Aftermarket replacement RH bucket tilt cylinder for Takeuchi® skid loader. 65mm bore x 475mm stroke and 35mm diameter rod. Fits Takeuchi® models TL8, TL130 & TL230. Replaces Takeuchi® cylinders 1900081300 & 1900132100



Weight	Rod	Bore	Stroke
44lbs	35mm	65mm	475mm

AFTERMARKET CASE® CYLINDERS

Aftermarket Case® Cylinders

BMF-118110A1

Aftermarket Case®
Tilt Cylinder



Weight	Rod	Bore	Stroke
28.6lbs	1.25in	2.5in	15.83in

Replacement bucket tilt cylinder for Case IH® skid steer & compact track loader. 2.50" bore x 21.26"stroke and 1.25" diameter rod. Fits Case® model numbers 1835, 1835B, 1835C, 1838 & 1840. Also can replace OEM part number G103407 and 276126A1. Serial number info; 1830 - 9845302 & after.

BMF-118156A1

Aftermarket Case®
Tilt Cylinder



Weight	Rod	Bore	Stroke
36.3lbs	1.25in	2.5in	21.26in

Replacement bucket tilt cylinder for Case IH® skid steer & compact track loader. 2.50" bore x 21.26"stroke and 1.25" diameter rod. Fits Case® model numbers 1845, 1845B, 1845C & 1845S. Also can replace OEM part number G34926.

BMF-177256A1

Aftermarket Case®
Universal Stabilizer
Cylinder



Weight	Rod	Bore	Stroke
125 lbs	2.25in	5.00in	20.33in

Aftermarket Universal stabilizer cylinder used on Case® backhoe. 5.00" bore x 20.33"stroke and 2.25" diameter rod. Fits Case® model numbers 590 Turbo, 590 Super L & 590 Super M -Used for Left & Right Hand.

BMF-G110672

Aftermarket Case®
Stabilizer Cylinder



Weight	Rod	Bore	Stroke
113lbs	2in	4.25in	21-3/8in

Aftermarket stabilizer cylinder for Case® loader-backhoe. 4.25" bore x 21-3/8" stroke and 2.00" diameter rod. Fits Case® model number 580K. Works on either right or left hand side. Interchanges with Part # G110672 and G110673.

BMF-117824A1

Aftermarket Case®
Tilt Cylinder



Weight	Rod	Bore	Stroke
60lbs	2.25in	5in	20.33in

Aftermarket lift cylinder for Case® skid steer. 2.50" bore x 26.75" stroke and 1.50" diameter rod. Fits Case® model numbers 1835B, 1835C, 1838, 1840. Interchanges with Part # G106818, G110666 and 27615A1.

BMF-G106168

Aftermarket Case®
Boom Cylinder



Weight	Rod	Bore	Stroke
110 lbs	1.75in	3.25in	41.88in

Replacement boom cylinder for Case® backhoe. 3.25" bore x 42"stroke and 1.75" diameter rod. Fits Case® model numbers 1580B, 580C, 580D, 580E, and 580 Super E. Also can replace OEM part number G109339 and G101177.

BMF-234447A1

Aftermarket Case®
Power Steering Cylinder
(D128454)



Weight	Rod	Bore	Stroke
4.5 lbs	0.75in	1.50in	6.42in

Replacement power steering cylinder for Case® loader backhoe. 1.5" bore x 6.4"stroke and 0.75" diameter rod. Fits Case® model numbers 80B, 480C, 480D, 480E, 480F, 480LL, 580B, 580C, 580D, 580F, 580SD, 580SE, 584C, 584D, 584E, 585C, 585D, 585E, 586C, 586D, 586E, 586G.

Aftermarket Case® Cylinders

BMF-G109434

Aftermarket Case®
Backhoe Bucket
Cylinder



Weight	Rod	Bore	Stroke
112 lbs	2.5in	3.5in	30.5in

Aftermarket replacement bucket cylinder for Case® backhoe. 3.5" bore x 30.5"stroke and 2.5" diameter rod. Fits Case® models 580B, 580C, 580D, 580 Super D, 580E, 580 Super E. Will not fit a Case® 580CK. Replaces OEM cylinder G109433 or G109434.

BMF-87384876

Replacement Case®
Loader Lift Cylinder



Weight	Rod	Bore	Stroke
71 lbs	1.75"	3.25"	30.16"

Replacement loader lift cylinder for Case® backhoes & skip loader landscapers. 3.25" bore x 30.16"stroke and 1.75" diameter rod. Fits Case® model numbers 570LXT, 570MXT, 570NXT, 570N EP, 580L, 580 Super L, 580M, 580 Super M & 580N EP.

BMF-1997-21A1/20A1

Replacement Case®
Universal (RH & LH)
Outrigger Stabilizer
Cylinder



Weight	Rod	Bore	Stroke
87lbs	2.00"	4.25"	21.75"

Replacement right hand & left hand outrigger stabilizer cylinder for Case® backhoes. 4.25" bore x 21.75"stroke and 2.00" diameter rod. Fits Case® model numbers 580 Super K, 580 Super L & 580 Super M. Also can replace OEM part number 199720A1, 199721A1, 110298A1 & 110301A1.

BMF-8442160-5/6

Replacement Case®
Universal (RH & LH)
Outrigger Stabilizer
Cylinder



Weight	Rod	Bore	Stroke
117 lbs	2.25"	4.50"	21.38"

Replacement right hand & left hand outrigger stabilizer cylinder for Case Construction® backhoes. 4.50" bore x 21.38"stroke and 2.25" diameter rod. Fits Case® model numbers 580 SN. Also can replace OEM part number 84421605 & 84421606.



MATERIAL HANDLING EQUIPMENT

Aftermarket JLG® Cylinders

BMF-1001150539

Aftermarket JLG®
Steer Cylinder



Weight	Rod	Bore	Stroke
37lbs	38mm	75mm	260mm

Aftermarket replacement steer cylinder for JLG® equipment. 75mm bore x 260mm stroke and 38mm diameter rod.

Aftermarket TOYOTA® Cylinders

BMF-TY6551OU257271

Aftermarket Toyota®
Tilt Cylinder



Weight	Rod	Bore	Stroke
26lbs	30mm	70mm	94mm

Aftermarket replacement tilt cylinder for Toyota® forklift. 70mm bore x 94mm stroke and 30mm diameter rod.

BMF-6555OU353471

Aftermarket Toyota®
Forklift Tilt J53 Cylinder



Weight	Rod	Bore	Stroke
29lbs	30mm	75mm	103mm

Aftermarket replacement tilt cylinder for Toyota® forklift. 75mm bore x 102mm stroke and 30mm diameter rod.

Aftermarket Hyundai® Cylinders

BMF-31FK09001

Aftermarket Hyundai®
Steer Cylinder



Weight	Rod	Bore	Stroke
40lbs	50mm	70mm	156mm

Aftermarket replacement steer cylinder for Hyundai® forklift. 70mm bore x 156.4mm stroke and 50mm diameter rod.

Aftermarket Komatsu® Cylinders

BMF-Y438103

Aftermarket Komatsu®/Long
Reach® Side Shift Cylinder



Weight	Rod	Bore	Stroke
12lbs	19mm	45mm	204mm

Aftermarket replacement side shift cylinder for Komatsu®/Long Reach® forklift attachment. 45mm bore x 204mm stroke and 19mm diameter rod.

Aftermarket Genie® Cylinders

BMF-105547

Aftermarket Replacement
Genie® Steer Cylinder



Weight	Rod	Bore	Stroke
8lbs	20mm	40mm	6in

Aftermarket replacement steer cylinder for Genie® equipment. 40mm bore x 6" stroke and 40mm diameter rod.

Aftermarket Hyster® Cylinders

BMF-1366081

Aftermarket Hyster®
Tilt Cylinder



Weight	Rod	Bore	Stroke
15lbs	1.25in	70mm	70mm

Aftermarket replacement tilt cylinder for Hyster® forklift. 70mm bore x 116mm stroke and 1.25" diameter rod.



AGRICULTURE MACHINERY

Aftermarket John Deere® Cylinders

BMF-AH176383

Swing Cylinder

Replacement John Deere® unloading cylinder.

Replaces part numbers: AH176383, AH145030, AH166484 & AH142164.



Weight	Rod	Bore	Stroke
21lbs	32mm	50mm	537mm

BMF-AH236427

Unload Swing Cylinder

Replacement John Deere® unload swing cylinder.

Replaces part numbers: AH176382, AH174432 & AH236427.



Weight	Rod	Bore	Stroke
25lbs	32mm	50mm	697mm

BMF-AH166921

Header Lift Cylinder

Replacement John Deere® header lift cylinder.

Replaces part number AH166921.



Weight	Rod	Bore	Stroke
78lbs	70mm	80mm	586mm

BMF-AHC15694

Replacement John Deere® Dozer Blade Cylinder

Replacement dozer blade cylinder for John Deere® dozers. Includes x2 spherical bearings. 63mm bore x 478mm stroke and 40mm diameter rod. Fits John Deere® model numbers 450H, 450J.



Weight	Rod	Bore	Stroke
43 lbs	40mm	63mm	478mm

BMF-AH211851

Aftermarket John Deere® Dozer Blade Angle Cylinder

Aftermarket replacement blade angle cylinder for John Deere® Dozer. 70mm bore x 405mm stroke and 45mm diameter rod. Fits John Deere® models 550H (s/n 925556-later), 550J (s/n 159986-earlier), 650H (s/n 925556-later) & 650J (s/n 159986-earlier). Includes installed spherical bearings and snap rings.



Weight	Rod	Bore	Stroke
49lbs	45mm	70mm	405mm

AFTERMARKET NEW HOLLAND® CYLINDERS

Aftermarket New Holland® Cylinders

BMF-87038982

Replacement New Holland® Bucket Tilt Cylinder



Weight	Rod	Bore	Stroke
33lbs	1.25"	2.50"	17.61"

Replacement bucket tilt cylinder for New Holland® skid steers and wheel loaders. 2.50" bore x 17.61"stroke and 1.25" diameter rod. Fits New Holland® model numbers C185, L180, L185, L865, LS180, LS180B, LS185, LS185B, LT185B, LX865, LX885, 87038982, 86630358, 86570930 & 86590829.

BMF-87038978

Replacement New Holland® Bucket Tilt Cylinder



Weight	Rod	Bore	Stroke
30lbs	1.25"	2.25"	17.88"

Replacement bucket tilt cylinder for New Holland® skid steers and wheel loaders. 2.50" bore x 17.88"stroke and 1.25" diameter rod. Fits New Holland® model numbers L565, LX565, LX665, C175, L160, L170, L175, LS160, LS170.

AFTERMARKET CASE® CYLINDERS

Aftermarket Case® Cylinders

BMF-87728497

Feeder House Lift Cylinder



Weight	Rod	Bore	Stroke
99lbs	90mm	100mm	525mm

Replacement Case IH® feeder house lift cylinder. Replaces part number 87728497



ROLL OFF
CONTAINER PARTS

AFTERMARKET GALBRETH® CYLINDERS

Aftermarket Galbreth® Cylinders

BMF-A3091

Aftermarket Galbreth® Stinger
Tail Roll Off Cylinder



Aftermarket replacement cylinder used on Galbreth® Hydraulic extendable tail roll off hoists. Also can replace OEM part numbers 1141039, G1-A3091, 3074 & A5735.

Weight	Rod	Bore	Stroke
189lbs	2.5in	3.5in	80in

AFTERMARKET PIONEER® CYLINDERS

Aftermarket Pioneer® Cylinders

BMF-HR4520

Aftermarket Pioneer® Gantry
Cylinder - 36" Stroke



Aftermarket replacement gantry cylinder for Pioneer® Strong Arm Rack n' Pinion Systems tarp assemblies RP4500, HR1500PTO & HR1500H. Cylinder has 36" stroke.

BMF-HR4719

Aftermarket Pioneer® Rack
Gear Cylinder - 16" Stroke



Aftermarket replacement rack gear cylinder for Pioneer® tarp assemblies RP4500SAR, RP4500SARG. Cylinder has 16" stroke.

BMF-HR4752

Aftermarket Pioneer® Strong
Arm Cylinder - 36" Stroke



Aftermarket replacement arm extension cylinder for Pioneer® tarp assemblies RP4500SAR & RP4500SARG. Cylinder has 36" stroke.

BMF-3431

Replacement end container hook for 7/8th inch cable.

SOLD IN CRATE OF 25

Standard industry designed, high strength forged steel cable hook. Can be used on any make or model of roll-off that uses a 7/8" reeving cable.

Cross Reference: 3431, 0651403, 115106, 3120, PP341, M1009A, 1105786, 41001435





489 McLaws Circle, Ste 2
Williamsburg, VA 23185
Phone: 1-844-468-3491
Email: sales@bmfhydraulics.com
Web: bmfhydraulics.com

BMF Hydraulics Inc. manufactures custom hydraulic cylinders and related mechanical components. We have extensive experience producing the highest quality cylinders and replacement parts for many demanding industrial applications such as: construction, material handling, waste & refuse, steel recycling, agriculture and mining.

With both US East and West coast warehouse facilities, we offer our customers localized inventory solutions to help deliver their critical components when they need them.

BMF Hydraulics also has knowledgeable project managers and dedicated sales staff to help guide you through the buying process and get you the right part in a timely manner to get your equipment back up and running!

All equipment manufacturer's names, part numbers, and descriptions are used for reference purposes only. All pictures shown are for illustration purpose only, actual product may vary. Paint color may differ from OEM.

